



# MONTHLY MEMBERSHIP PROGRESS REPORT

District 2 S4

Results as of: 8/31/2016

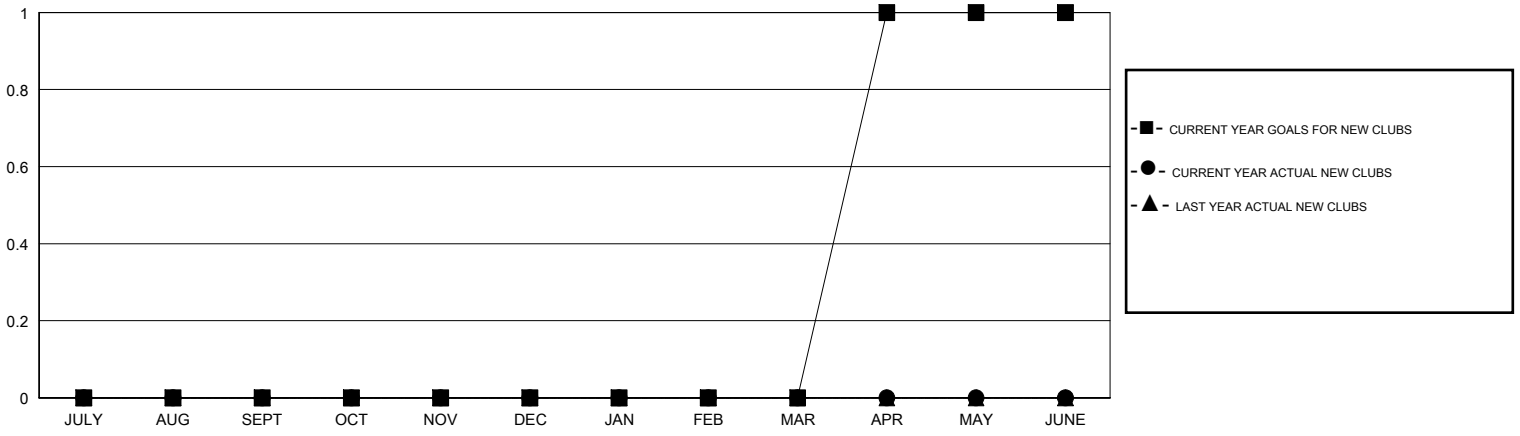
GMT: HAL GRIFFIN

LOCATION TEXAS

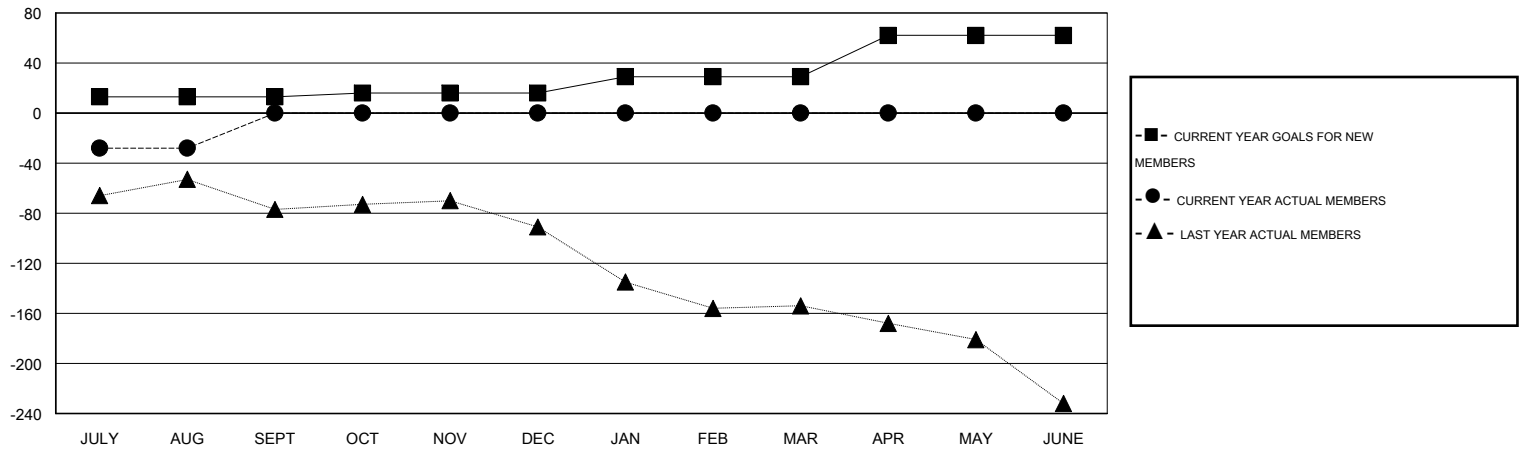
GMT CA 1

Clubs					Members				
RESULTS FOR 2016-2017					RESULTS FOR 2016-2017				
QUARTER	NEW CLUB GOAL	NEW CLUBS	DROPPED CLUBS	NET GAIN/LOSS	QUARTER	NEW MEMBER GOAL	CHARTER AND NEW MEMBERS ADDED	DROPPED MEMBERS	NET GAIN/LOSS
JULY/AUG/SEPT	0	0	1	-1	JULY/AUG/SEPT	13	64	92	-28
OCT/NOV/DEC	0	0	0	0	OCT/NOV/DEC	3	0	0	0
JAN/FEB/MAR	0	0	0	0	JAN/FEB/MAR	13	0	0	0
APR/MAY/JUNE	1	0	0	0	APR/MAY/JUNE	33	0	0	0

GOALS AND ACTUAL NEW CLUBS CUMULATIVE



GOALS AND ACTUAL MEMBERS CUMULATIVE



DROPPED CLUBS: 1	28 CLUBS OF 83 ADDED 1 OR MORE NEW MEMBERS	<u>GENDER DISTRIBUTION</u>	
		MALE	1,425 (60.74%)
<u>DROPPED MEMBERS</u>		FEMALE	921 (39.26%)
DECEASED	1	<a href="#">CLICK HERE FOR HEALTH ASSESSMENT DATA</a>	
CLUB CANCELLED	2		
OTHER	89		
TOTAL	92	FAMILY UNIT MEMBERS	395
		HEAD OF HOUSEHOLD	194
		NON-HEAD OF HOUSEHOLD	201